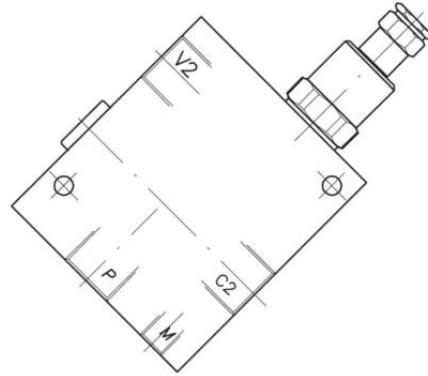
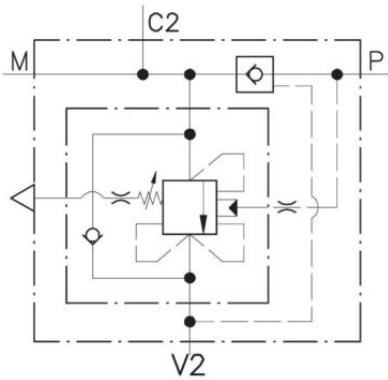


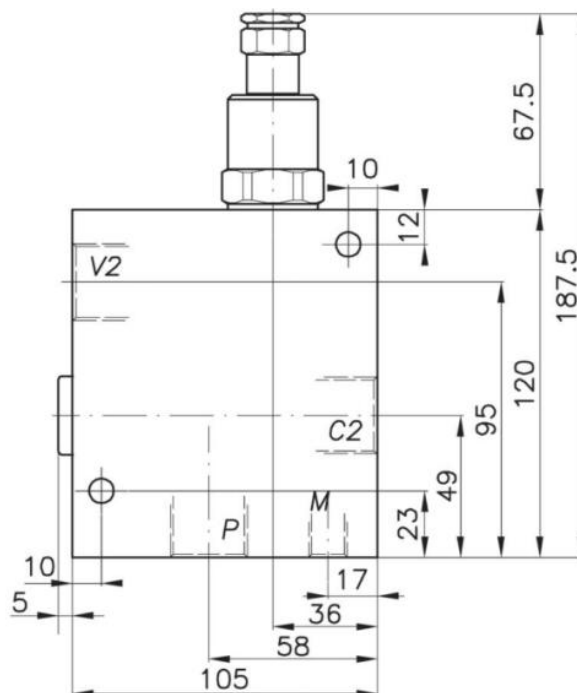
## DIFFERENTIALVENTIL – HY24



### PERFORMANCE

**DN 12**  
**160 l/min - 42 GPM**  
**350 bar - 5075 PSI**  
**350 bar - 5075 PSI**  
**-30°C + 50°C**  
**-30°C + 80°C**  
**30 micron**

Rated size  
 Max flow in V2 port  
 Max working pressure  
 Max setting pressure  
 Room temperature  
 Oil temperature  
 Recommended filtration  
 Weight



## DIFFERENTIALVENTIL – HY24

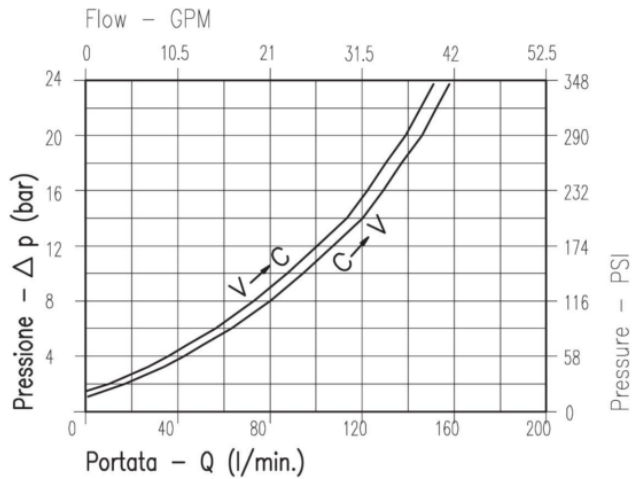
### Note:

Valve should be set at 1.3 times load induced pressure.

Max working pressure:  
350 bar/1.3 = 270 bar

This valve is used for fast extension of cylinder rod: typical application in small presses and trash compactors. Cut out pressure of the regenerative function can be adjusted within a pressure range by an overcenter valve.

Steel manifold as standard



Oil viscosity 46 cSt at 50°C

## TYPICAL CIRCUIT EXAMPLE

